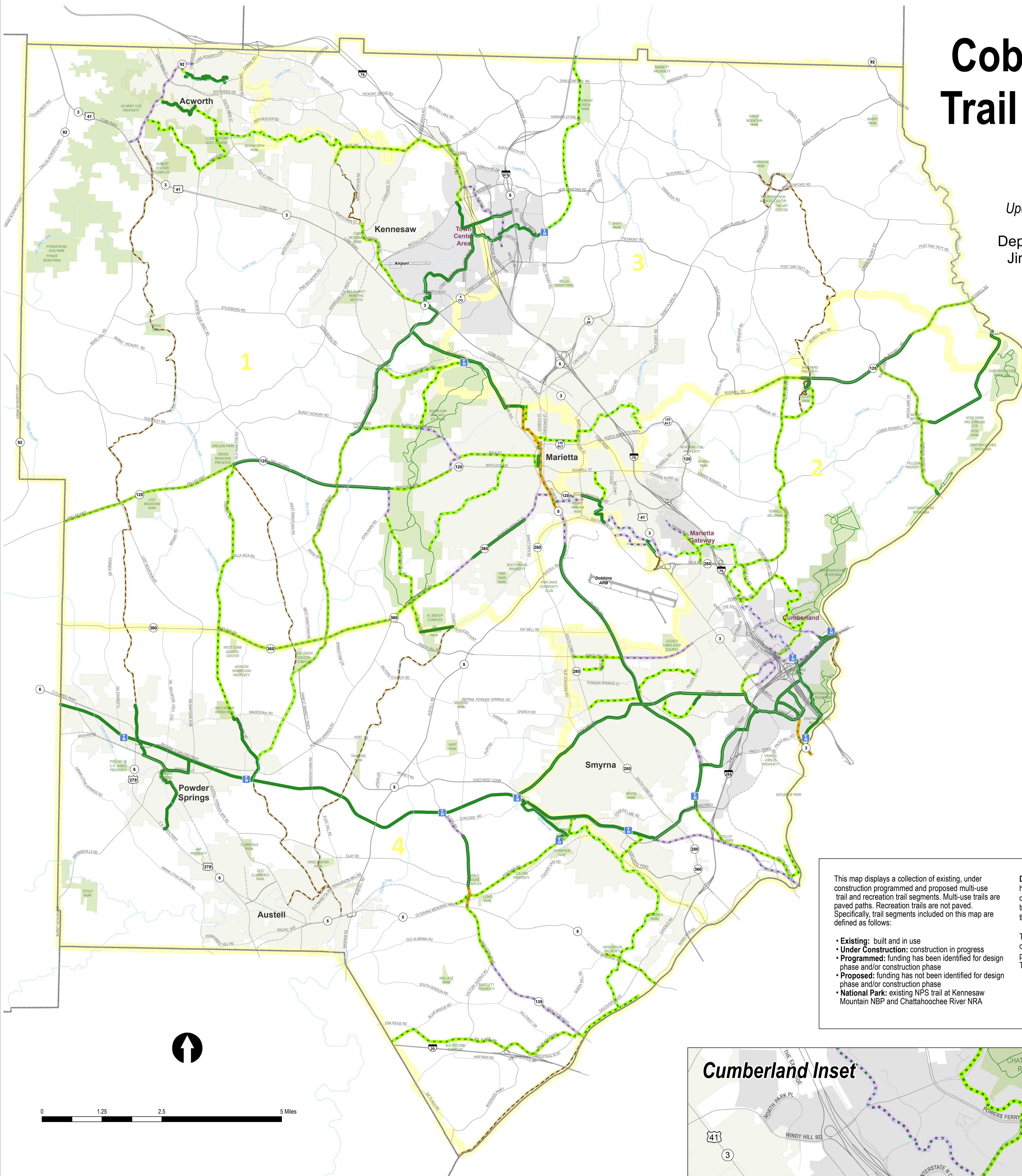


Cobb County Trail Planning Map

Updated: January 5, 2016

Dept. of Transportation
Jim Wilgus, Director
(770) 528-1600



LEGEND

- Trail Head
- Park
- City
- Community Improvement District
- Commission District

Multi-Use Trails

- Existing
- Under Construction
- Programmed
- Proposed

Recreation Trails

- Existing
- Proposed

Nat'l Park Trails

- Existing

This map displays a collection of existing, under construction programmed and proposed multi-use trail and recreation trail segments. Multi-use trails are paved paths. Recreation trails are not paved. Specifically, trail segments included on this map are defined as follows:

- **Existing:** built and in use
- **Under Construction:** construction in progress
- **Programmed:** funding has been identified for design phase and/or construction phase
- **Proposed:** funding has not been identified for design phase and/or construction phase
- **National Park:** existing NPS trail at Kennesaw Mountain NBP and Chattahoochee River NRA

Disclaimer: The Board of Commissioners (Board) has not adopted this map. Proposed trail segments are displayed for planning purposes only. Display of proposed trail segments does not represent a commitment by the Board to fund and construct.

The collection of proposed trail segments represented on this map were included in a variety of Board-approved plans and studies, including Comprehensive Transportation Plan 2040.

